





Galleria

Designer: Pearson Lloyd
Year: 2013

Galleria is a complete design with the versatility to create a vast range of different solutions: a linear bench, a double corner seat, an island perfect for waiting, relaxation and conviviality. And all this is developed around a simple steel bar, onto which to freely attach the various simple, geometrically-shaped elements in wood, leather, fabric, marble and metal painted in a range of colours. Each composition can be used on its own or in groups, offering endless possibilities for use that will blend beautifully with any space or style.

Developed by Tacchini in Italy

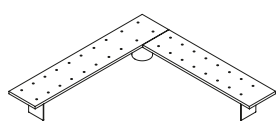
Dimensions (cm)

Cod. OGALA250

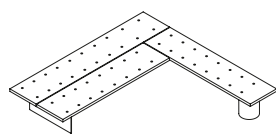
Cod. OGALB250

Cod. OGALC250

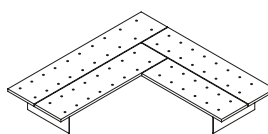
Cod. OGALD300



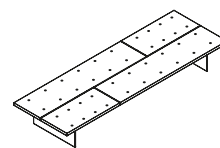
L 250 P 250 H 42 cm
Seat H 42 cm



L 250 P 250 H 42 cm
Seat H 42 cm



L 250 P 250 H 42 cm
Seat H 42 cm



L 300 P 98 H 42 cm
Seat H 42 cm

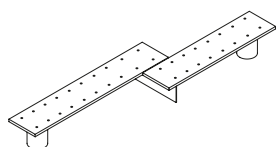
Cod. OGALSH400

Cod. OGALSI300

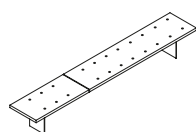
Cod. OGALSS400

CAD Files:
3D (.dwg, .3ds)
2D (.dwg)

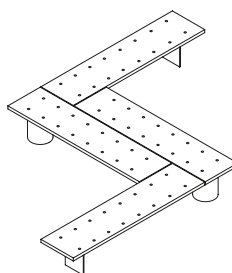
Download CAD files
at tacchini.it/en/downloads



L 400 P 98 H 42 cm
Seat H 42 cm



L 300 P 49 H 42 cm
Seat H 42 cm



L 400 P 250 H 42 cm
Seat H 42 cm

Cod. 1GALTM

Cod. 1GALTL

Cod. OGALC49

Cod. OGALC99

Cod. OGALP

Cod. 1GALT



Ø 40 H 10 cm



Ø 40 H 52 cm



49 x 49 cm



49 x 99 cm



L 100 P 18 H 34 cm



Ø 40.5 cm H 9.5 cm

Materials description

Frame: modular system benches in solid ash wood 49 mm.

Padding: differentiated - density polyurethane foam.

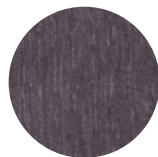
Base: tee steel beam linked to 10 mm steel blade or steel drum leg. Powder-coated painted.

Upholstery: non removable cover.

Table: steel top table mounted to beam.

Occasional side table: honeycomb ash wood lacquered.

Wooden top

T45
NaturalT49
Grey

Painted base

T02
White RAL 9016T03
Grey RAL 7016

Little metal table

T02
White RAL 9016T03
Grey RAL 7016

Little marble table

T30
Matt White Carrara

Suggested upholsteries



Bellis



Davidia



Dianella



Draba



Erika



Divina

Materials informations



Ash wood	55%
Metal	23%
Polyurethane	12%
Upholstery	10%

Polyurethane

Flexible expanded polyurethane is a solid elastic polymeric material with open cell structure. It is a non-toxic material and above all free from ozone-damaging components. Production and processing of the polyurethane we use meet the objectives of the new policy of ensuring the protection of human health and of the environment. We focus in particular on the choice and use of the types of density of polyurethane suitable for preserving over the years the features of load capacity, elasticity and resilience. For products used in public spaces flame-retardant expanded polyurethane is chosen, tested and certified according to international regulations.

Metal

The need to combine complex yet lightweight shapes with resistant materials necessarily involves the use of metals such as steel and aluminium. products in polyurethane foam are made with an inner steel frame for adding strength to the structure. The bases are in tubular metal which can be chromed with a gloss or satin finish or painted with epoxy powders.

Wood

Wood is a renewable raw material. All products derived from wood, such as for example plywood, have the advantage of being able to be machined more easily than wood and do not deform. The timber we use – solid or plywood – comes mainly from European and Russian forests and is seasoned to specific values of humidity with tests. Most of the structures of the products in the collection have a frame in solid pine or ash, or in beech or poplar plywood.

Recyclability

All Galleria elements are 100% recyclable when fully separated. Tacchini undertakes on-going research and development, with efforts made to introduce products which are a perfect combination of function and safety without jeopardizing the final design of the same articles. During production attempts are made to minimize noise and emission levels and to reduce rejects as far as possible. All the single materials which make up the production process, once disassembled, can be reused several times, maintaining a high quality standard.

Packaging

Galleria element is dispatched already assembled. It is protected by tissue paper and cellophane to protect the covering from dust and direct contact with the cardboard. The product is packed in rigid cardboard boxes suitable for world export. Manufacture of the packaging observes the criteria for recovery both as recycling and energy recovery and composting.

Once a product reaches the end of its life cycle it has to be eliminated.

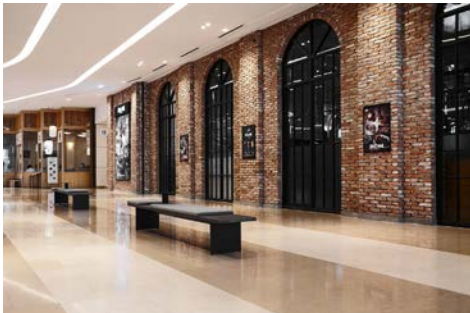
To discover more about Tacchini environmental policy please visit: www.tacchini.it



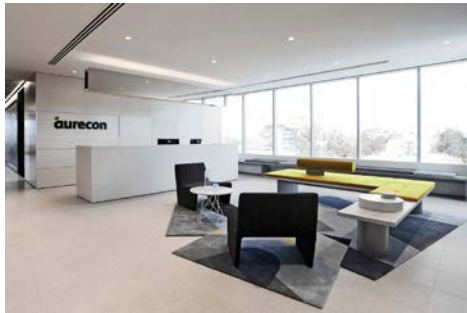
Pearson Lloyd

Pearson Lloyd is one of the leading names in contemporary British design, and this multidisciplinary studio works in a wide range of sectors: from furnishing to public spaces to brand development. Established by Luke Pearson and Tom Lloyd in 1997, the studio has received numerous acknowledgements and accolades in both Europe and the United States. The British design duo write regularly for major design magazines, as well as acting as “visiting lecturers” at the École Cantonale d’Art in Lausanne.

Other products by Pearson Lloyd: Crystal, Crystal Armchair, Eddy, Fixie, Ischia, Nebula, Nebula Interiors, Nebula Poissons, Polar, Polar Armchair, Polar Perch, Polar Table, Quilt, Stone.

Tacchini Projects:

Starfield Hanam
(Hanam, South Korea)



Aurecon
(Brisbane, Australia)



Campari Gallery
(Milan, Italy)